

## QUICK START GUIDE

### 1] PRODUCT PRESENTATION

The ML-350M provides fire certified solenoid type locking. It is suitable for both horizontal or vertical mounting, double action door sets, and features a bi-directional snib.

Manufactured from stainless steel, this lock is fail safe and ideal for use on emergency escapes. With both lock status and door status monitoring it is easy to check the status of critical doors.

Feature	Description
<b>Material</b>	Stainless steel
<b>Mounting</b>	Horizontal or vertical, flush or surface (with ML350-SH housing)
<b>Handing</b>	Reversible
<b>Power Input</b>	12/24Vdc
<b>Consumption</b>	300mA @ 12Vdc, 150mA @ 24Vdc
<b>Cycle Testing</b>	Tested for over 250,000 cycles
<b>Holding Force</b>	Up to 650kg
<b>Side-Load</b>	225kg
<b>Weight</b>	0.673 kg



WEEE &amp; RoHS



CE Certification



-10°C to +45°C



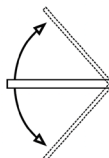
UKCA Certification



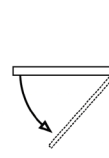
Fire Rating: EN 14846 (2008), EN 1634-1 (60 min)



#### Swing Door Application



Double Swing Door

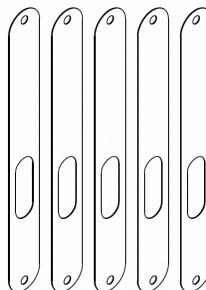


Single Outswing Door



Single Inswing Door

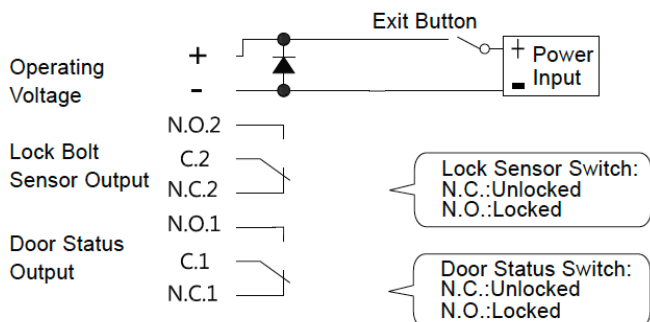
#### Filler Plates



Supplied with 5 filler plates.

When the door is closed and locked, the door gap needs to be less than 5mm so the auxiliary deadlatch is properly depressed. Add filler plates to compensate for wide door gaps.

### 2] ELECTRICAL CONNECTIONS

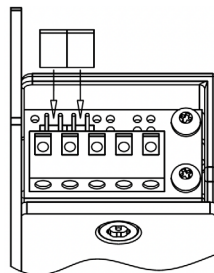


#### Voltage Selection Jumpers

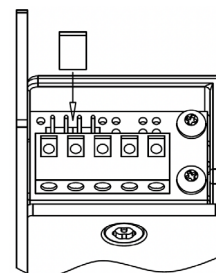
Check jumper settings before connecting the lock to 24Vdc input power. Damage to the lock may result from incorrect jumper settings.



12Vdc

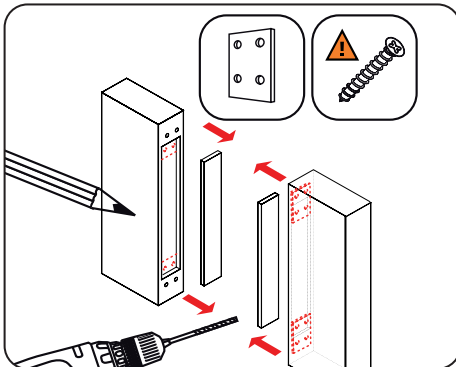


24Vdc



### 3] MOUNTING

#### Mortice Installation


**1**

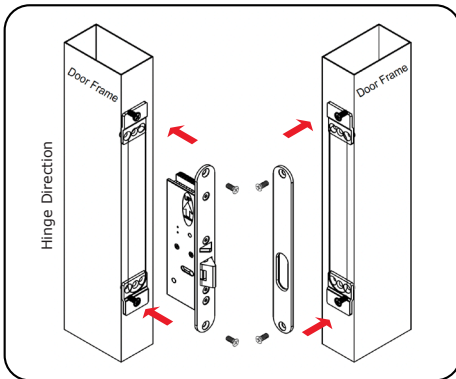
Make a cut on the door leaf and on the door jamb in order to insert the ML-350M lock and faceplate. Then mark the mounting holes of the mounting screws. Drill the surface of the mounting holes. Then fix the mounting plates to the frames (note the mounting screws are not supplied).

**2**

Insert the cables and connect them to the power supply. Temporarily mount the ML-350M. Then adjust the gap between the lock and the faceplate by adjusting the top screws on the armature, allow 2mm distance maximum. Tighten the 2 screws once the alignment test with the lock and faceplate completed.

**3**

Test the functioning of the lock and faceplate on the backplate, then fix the parts to the mounting plates.



#### Surface Installation (with ML-350SH housing)

**1**

Measure and mark the centre lines to determine the position of the lock on the jamb and the position of the faceplate on the door leaf. Then drill the fixing screw holes.

**Important:** The surface housing can be mounted horizontally or vertically and must be fitted on the secure side of the door.

**2**

Take the power cable out and connect the lock. Mount the brackets of the housing on the jamb and on the door leaf. Temporarily fix the lock and the faceplate to the bracket of the housing. Then adjust the gap between the magnet and the armature plate by adjusting the top screws on the armature and allow 2mm distance maximum. Tighten the 2 screws once the alignment test with the lock and faceplate is completed.

**3**

Test the functioning of the lock and faceplate. Place the lock on the backplate of the surface housing. Place the faceplate on the second backplate of the surface housing and fix the housings to the door.

