

COPYRIGHT © Hangzhou EZVIZ Software Co., Ltd. ALL RIGHTS RESERVED.

Any and all information, including, among others, wordings, pictures, graphs are the properties of Hangzhou EZVIZ Software Co., Ltd. (hereinafter referred to as “EZVIZ”). This user manual (hereinafter referred to as “the Manual”) cannot be reproduced, changed, translated, or distributed, partially or wholly, by any means, without the prior written permission of EZVIZ. Unless otherwise stipulated, EZVIZ does not make any warranties, guarantees or representations, express or implied, regarding to the Manual.


### **About this Manual**

The Manual includes instructions for using and managing the product. Pictures, charts, images and all other information hereinafter are for description and explanation only. The information contained in the Manual is subject to change, without notice, due to firmware updates or other reasons. Please find the latest version in the EZVIZ™ website (<http://www.ezviz.com>).

### **Revision Record**

New release – January, 2023

### **Trademarks Acknowledgement**

EZVIZ™, ™, and other EZVIZ's trademarks and logos are the properties of EZVIZ in various jurisdictions. Other trademarks and logos mentioned below are the properties of their respective owners.

### **Legal Disclaimer**

TO THE MAXIMUM EXTENT PERMITTED BY APPLICABLE LAW, THE PRODUCT DESCRIBED, WITH ITS HARDWARE, SOFTWARE AND FIRMWARE, IS PROVIDED “AS IS”, WITH ALL FAULTS AND ERRORS, AND EZVIZ MAKES NO WARRANTIES, EXPRESS OR IMPLIED, INCLUDING WITHOUT LIMITATION, MERCHANTABILITY, SATISFACTORY QUALITY, FITNESS FOR A PARTICULAR PURPOSE, AND NON-INFRINGEMENT OF THIRD PARTY. IN NO EVENT WILL EZVIZ, ITS DIRECTORS, OFFICERS, EMPLOYEES, OR AGENTS BE LIABLE TO YOU FOR ANY SPECIAL, CONSEQUENTIAL, INCIDENTAL, OR INDIRECT DAMAGES, INCLUDING, AMONG OTHERS, DAMAGES FOR LOSS OF BUSINESS PROFITS, BUSINESS INTERRUPTION, OR LOSS OF DATA OR DOCUMENTATION, IN CONNECTION WITH THE USE OF THIS PRODUCT, EVEN IF EZVIZ HAS BEEN ADVISED OF THE POSSIBILITY OF SUCH DAMAGES.

TO THE MAXIMUM EXTENT PERMITTED BY APPLICABLE LAW, IN NO EVENT SHALL EZVIZ'S TOTAL LIABILITY FOR ALL DAMAGES EXCEED THE ORIGINAL PURCHASE PRICE OF THE PRODUCT.

EZVIZ DOES NOT UNDERTAKE ANY LIABILITY FOR PERSONAL INJURY OR PROPERTY DAMAGE AS THE RESULT OF PRODUCT INTERRUPTION OR SERVICE TERMINATION CAUSED BY: A) IMPROPER INSTALLATION OR USAGE OTHER THAN AS REQUESTED; B) THE PROTECTION OF NATIONAL OR PUBLIC INTERESTS; C) FORCE MAJEURE; D) YOURSELF OR THE THIRD PARTY, INCLUDING WITHOUT LIMITATION, USING ANY THIRD PARTY'S PRODUCTS, SOFTWARE, APPLICATIONS, AND AMONG OTHERS.

REGARDING TO THE PRODUCT WITH INTERNET ACCESS, THE USE OF PRODUCT SHALL BE WHOLLY AT YOUR OWN RISKS. EZVIZ SHALL NOT TAKE ANY RESPONSIBILITIES FOR ABNORMAL OPERATION, PRIVACY LEAKAGE OR OTHER DAMAGES RESULTING FROM CYBER ATTACK, HACKER ATTACK, VIRUS INSPECTION, OR OTHER INTERNET SECURITY RISKS; HOWEVER, EZVIZ WILL PROVIDE TIMELY TECHNICAL SUPPORT IF REQUIRED. SURVEILLANCE LAWS AND DATA PROTECTION LAWS VARY BY JURISDICTION. PLEASE CHECK ALL RELEVANT LAWS IN YOUR JURISDICTION BEFORE USING THIS PRODUCT IN ORDER TO ENSURE THAT YOUR USE CONFORMS TO THE APPLICABLE LAW. EZVIZ SHALL NOT BE LIABLE IN THE EVENT THAT THIS PRODUCT IS USED WITH ILLEGITIMATE PURPOSES.

IN THE EVENT OF ANY CONFLICTS BETWEEN THE ABOVE AND THE APPLICABLE LAW, THE LATTER PREVAILS.

# Table of Contents

<b>IMPORTANT SAFETY INSTRUCTIONS .....</b>	<b>3</b>
<b>Overview .....</b>	<b>4</b>
1. Package Contents .....	4
2. General.....	5
3. Basics .....	6
<b>About the Name Card.....</b>	<b>8</b>
<b>Setup.....</b>	<b>8</b>
<b>Installation .....</b>	<b>9</b>
1. Charge the Battery and Install the Monitor .....	9
2. Pair the Intercom Panel and the Monitor .....	11
3. Outdoor Wiring and Install the Intercom Panel .....	12
4. Install the Solar Panel.....	17
5. Initialize the Micro SD Card.....	18
<b>Add Video Doorphone to EZVIZ App .....</b>	<b>18</b>
<b>Configure the RFID Badge and Passcode .....</b>	<b>19</b>
<b>Four Unlocking Methods.....</b>	<b>19</b>
<b>View Your Device on the EZVIZ App .....</b>	<b>21</b>
1. Live View.....	21
2. Settings.....	22
<b>EZVIZ Connect.....</b>	<b>23</b>
<b>SAFETY PRECAUTIONS .....</b>	<b>25</b>
<b>Initiatives on the Use of Video Products.....</b>	<b>26</b>
<b>Appendix .....</b>	<b>27</b>
1. Rechargeable Lithium ion Battery .....	27
2. INFORMATION FOR PRIVATE HOUSEHOLDS .....	27

# IMPORTANT SAFETY INSTRUCTIONS



**Important!**

1. Please read the user manual carefully before installing or using this product.
2. If you are installing this product for a third party, please remember to leave the manual or a copy of it with the end user.

## **Safety measures:**

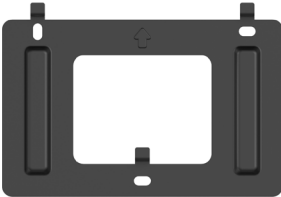
1. To operate this system in complete safety, it is essential that the installers, users, and technicians follow all of the safety procedures described in this manual.
2. Specific warnings and warning symbols are given for items if necessary.
3. The product must be set up according to the applicable standards in the country where it is installed.

Overview

1. Package Contents



Monitor (x1)  
7" touch screen



Wall Bracket for Monitor (x1)



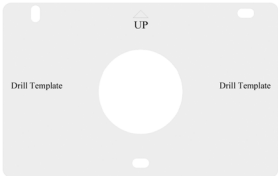
Power Adapter for Monitor (x1)



Intercom Panel (Doorbell)  
with a Weather-proof Shield (x1)



Drill Template for Intercom Panel (x1)



Drill Template for Monitor (x1)



Screwdriver for Intercom Panel(x1)



Screwdriver for Monitor (x1)



Battery for Intercom Panel (x1)



Power Cable for Battery (x1)



\* Badges (x3)



Power Supply Jack Connector Cable (x1)



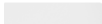
Screw Kit (x2)  
(PA4X25)



Screw Kit (x1)  
(PA3X25)



Spare Screws for Intercom Panel (x4)



Name card (x2)



Solar Panel (x1)




Pin (x1)



Regulatory Information (x2)



Quick Start Guide (x1)

 The power adapter's appearance is subject to the actual one you have bought.

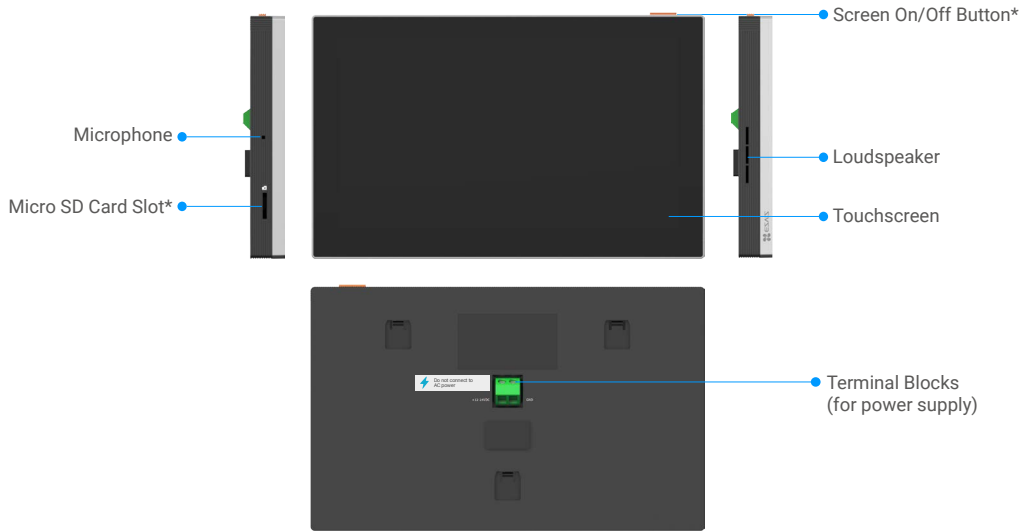
## 2. General

This video doorphone consists of an indoor answering unit with a touch screen and an outdoor panel with an intercom allowing you to see and communicate with the visitor who has pressed the doorbell button. It is easy to install as the intercom panel and the monitor are connected by Wi-Fi Halow (no need for wiring), only four wires are needed for the opening controls (strike plate and automated gate opening), and one connector of the solar panel is needed for connecting to the intercom panel for charging the battery for intercom panel.

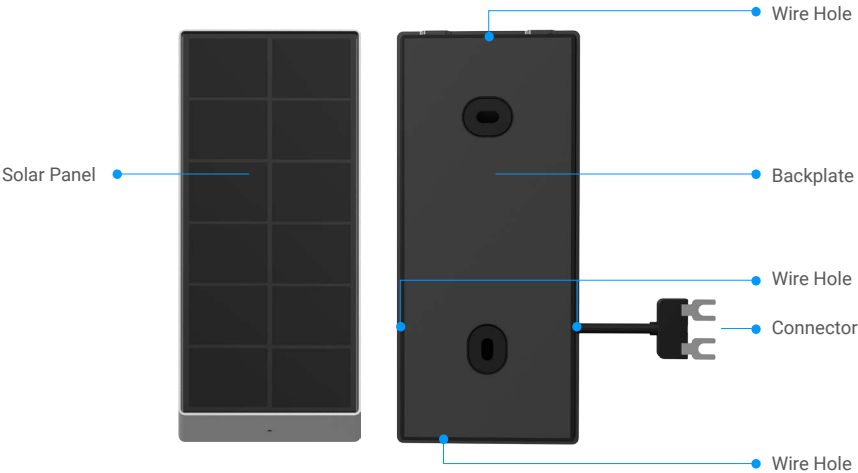
To get the most out of your intercom, please read this instruction manual carefully.

3. Basics

Monitor



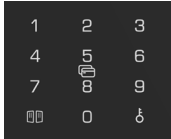
Solar Panel



Intercom Panel (Doorbell)



Name	Description
Screen On/Off Button	<ul style="list-style-type: none"><li>• Press to turn on/off the screen.</li><li>• Press and hold for 8s to restart the monitor.</li></ul>
Name Holder	To change the label in the name holder, pull the name holder tray from the left side of the device.
Doorbell Button Doorbell Lighting	When someone presses the doorbell button, the doorbell lighting will light, the inside monitor rings and the video is displayed.
Micro SD Card (sold separately)	Initialize the card in the EZVIZ app before using it. Recommended compatibility: Class 10, maximum space 512GB.



Icon	Description
0~9	Number key.
	After set the passcode on EZVIZ app, press the passcode first and  second to open the electric strike plate or lock you connected.
	After set the passcode on EZVIZ app, press the passcode first and  second to open the gate you connected.

## About the Name Card

- A name card has been pasted into the intercom panel included in the package, and you can write the name directly on it.
- There are 2 additional name cards included in the package, please keep them for further use.
- The name card can be torn off, and a new name card can be pasted over it.
- If you don't want to stick a name card, you can also use a marker to write the name directly on the name holder.
- We recommend you draw out the name holder and write the name, before installing the intercom panel on the weather-proof shield.

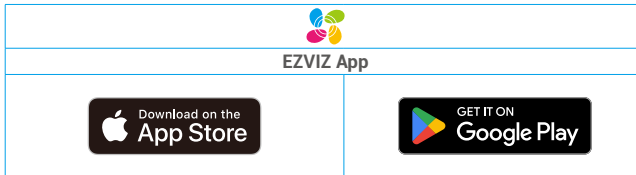
## Setup

### Follow the steps to set your system:

1. Get the EZVIZ app, and log in to your EZVIZ app account.
2. Install the monitor.
3. Pair the intercom panel and monitor.
4. Install the intercom panel and solar panel.
5. Add the monitor to your EZVIZ account.

### 1. Get the EZVIZ App

1. Connect your mobile phone to Wi-Fi (suggested).
2. Download and install the EZVIZ app by searching "EZVIZ" in the App Store or Google Play™.
3. Launch the app and register an EZVIZ user account.



- It is recommended that the EZVIZ app version should be 6.1 or later.
- If you have already used the app, please make sure that it is the latest version. To find out if an update is available, go to the app store and search for EZVIZ.



# Installation



## Advice and important instructions:

- If you test your product before installing it, ensure that you do not test it with the Intercom Panel and the monitor in the same room to avoid the video doorphone emitting a shrill noise.



- Do not expose the intercom panel lens to direct sunlight or a reflective surface.

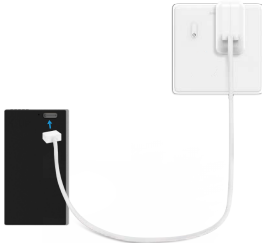
**Tip: we recommend that you use a protective sheath when doing the cabling in order to protect the cables against breakage and bad weather.**

- For the EZVIZ model, so as to get the most out of monitor's Wi-Fi function, we recommend that you check that your Wi-Fi network is accessible in your planned installation location
- Please make sure that all the wires are well connected before you plug the power adaptor into a wall outlet.

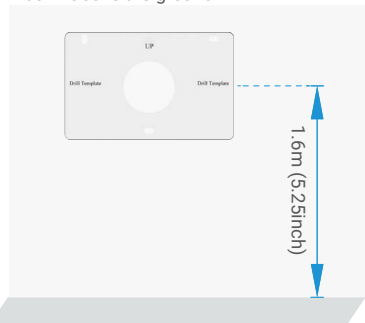
## 1. Charge the Battery and Install the Monitor

### 1 Charge the battery fully.

- i** The power cable is included in the package. Please purchase a 5V 2A power adapter, cause it is not included in the package.

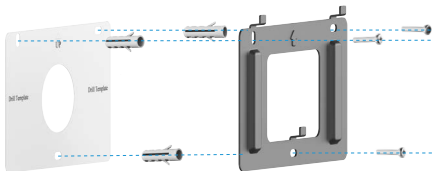


- ### 2 Place the drill template for monitor so that the monitor screen is at a height of around 1.60 m above the ground.

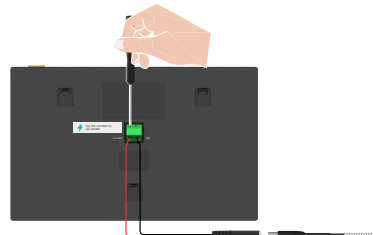


- Use the jack connector cable and the power adaptor to connect the monitor :

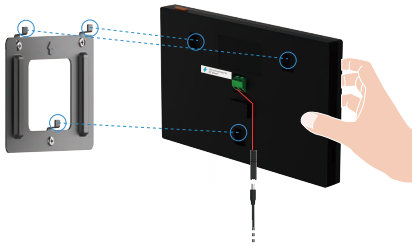
- ### 3 Fix the wall bracket with anchors and screws(PA4x25) to the wall.



- ### 4 Connect the red wire of jack connector cable to the +12-24VDC terminal of the monitor, the black wire to the ground terminal with screwdriver(included), the connector of jack connector to the power adaptor.




- 5 Place the monitor on the wall bracket.




- 6 Plug the adapter into the wall outlet.



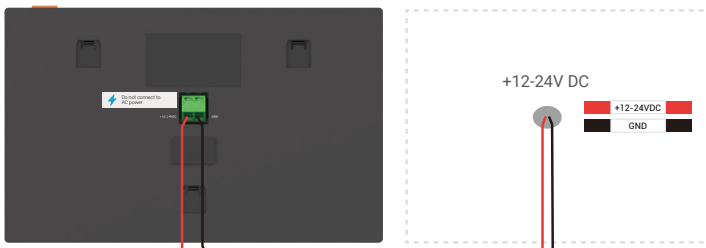
 **Important:** For a better image quality, please remove the protective film from the monitor before using it.



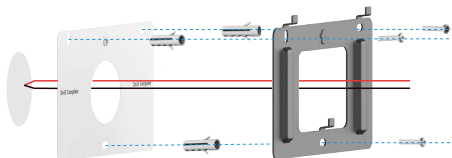
 **Warning:** during installation, do not connect the power supply to a wall outlet.

- Use the +12-24VDC power supply you reserved on the wall to connect the monitor, so that no exposed cables will be left on the wall :

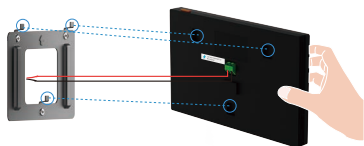
 **Warning:** during installation, please cut off the power.



- 3 Take the wires from the wall through the holes of the drill template and the wall bracket, then fix the wall bracket with anchors and screws (PA4x25) to the wall.

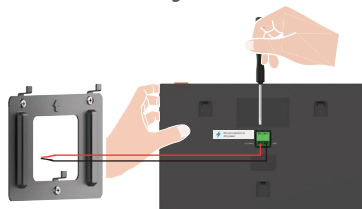


- 5 Place the monitor on the wall bracket.

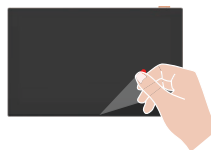


- 4 Connect the red (+12-24VDC) wire from your wall to the +12-24VDC terminal of the monitor, the black (Ground) wire from your wall to the GND terminal of the monitor.

**Warning:** The power supply must be DC and the voltage can't exceed 24V, otherwise it may cause serious damage to the device.



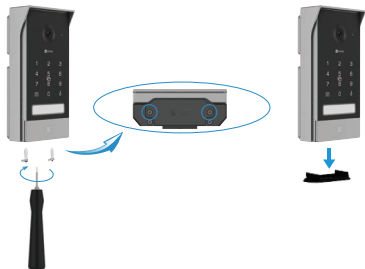
**Important:** For a better image quality, please remove the protective film from the monitor before using it.



## 2. Pair the Intercom Panel and the Monitor

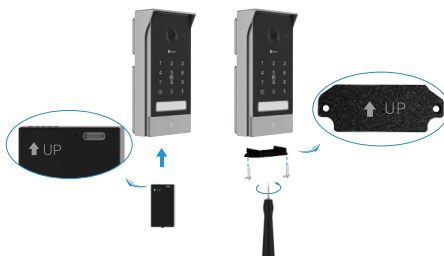
- i** Before start pairing, make sure your monitor is turned on (no other steps need to be done), which is for pairing the the intercom panel and the monitor.

- 1 Remove the screws with screwdriver (included) and battery cover under the intercom panel indoors.



- 2 Insert the battery into the intercom panel. Install the battery cover back with screws.

- i** When the intercom panel is power on, it turns on automatically.



- ③ When the monitor is on and the intercom panel is awakened, they will pair automatically. Press the doorbell button to awaken the intercom panel, the intercom panel will be connected to the monitor.

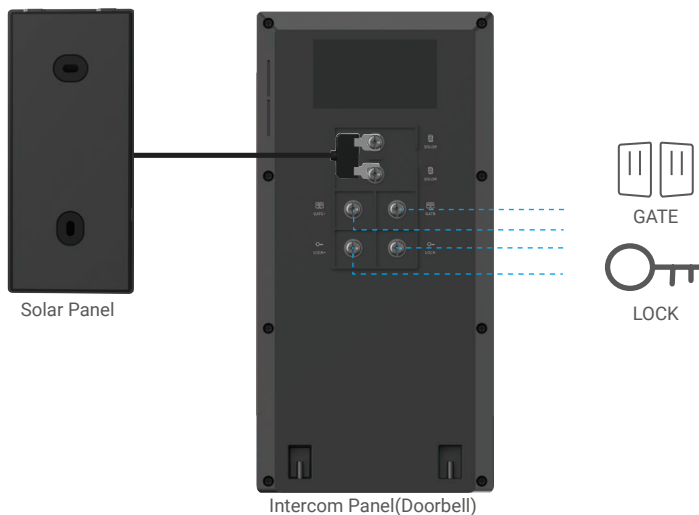


## 3. Outdoor Wiring and Install the Intercom Panel


### 3.1 Wiring

In order to avoid the risks of interference and malfunction, do not pass the wires for your video doorphone through the same sheath as the electrical wires.

**Warning:** Do not double up the wires to increase the cross-section under any circumstances.



1-1 wiring diagram

	$\varnothing 2 \times 0.75\text{mm}^2$	$\varnothing 2 \times 1.5\text{mm}^2$	Twisted Pair(TP)
	1-10m	1-10m	1-10m

**Warning:** The installation distance between the intercom panel and the monitor should not exceed **350m**.

## 1. Connect an Electric Strike Plate or Lock

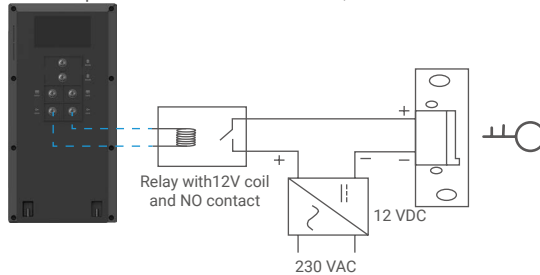
Connect it directly to terminals LOCK- and LOCK+ on the back of the intercom panel. For wiring, refer to the label on the back of the intercom panel and the wire specification table below.

**i** Note that this function is only valid if the screen is displaying the exterior video feed. An indicator will appear to confirm.

**! Important:** To ensure that the electric strike plate or lock can be unlocked by the video doorphone, you should meet the following two conditions:

1. The electric strike plate or lock that you order must have a mechanical memory.
2. The power supply to the electric strike plate or lock must not exceed 12V/0.8A

If the power supply to the electric strike plate or lock exceeds 12V/0.8A, do as follows.



## 2. Connect a Gate Motor

1. Directly connect the gate motor wires to terminals GATE- and GATE+ on the back of the intercom panel.
2. The intercom panel provides a 'dry'-contact connection, without an electric current, to connect to the button for your automated gate.

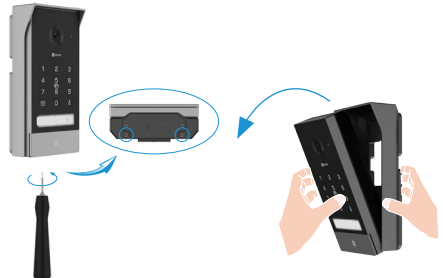
**i** Note that this function is only valid if the screen is displaying the exterior video feed. An indicator will appear to confirm.

**! Important:** The gate control: Breaking Capacity:12V/2A.

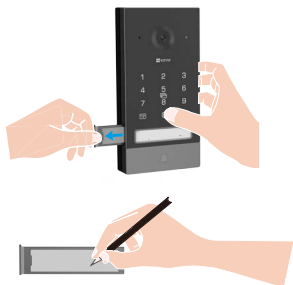


Before start installation, please confirm the location you want to install the intercom panel and the solar panel is appropriate, given the length of the solar panel wire and other practical factors.

- 1 Remove the screws under the intercom panel with the screwdriver (included), and tilt the intercom panel forwards.

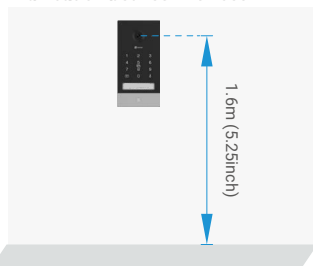


- 2 Draw out the name holder and write the name on the name card, take back the name holder.



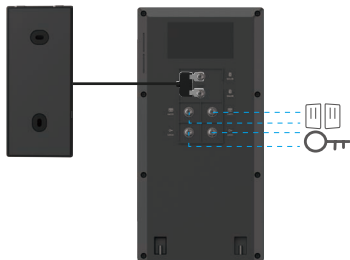
- 3 The lens of the panel must be placed at a height around 1.60m.

**⚠Warning:** Do not install the intercom panel on any mental surface, which may interfere the communication between devices.

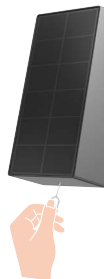


- 4 Solar panel, gate and lock terminals on intercom panel needed to be wired according to your need. Detailed wiring information see 3.1 Wiring.

- i** It's recommended to install solar panel on the side or above the intercom panel.

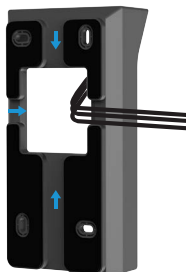


- 5 Use the pin provided to press and hold the hole at the bottom of the solar panel, meanwhile take the backplate off. It's easier to do the next connection just with the solar panel.

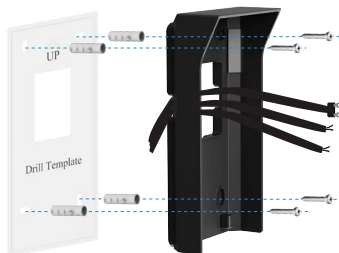


• **When the wires needed to be connected to intercom panel are not from the wall :**

- 6 Arrange the wires needed to be connected to the intercom panel through any grooves of the weather-proof shield. (The wires arranged below is just for your reference.)

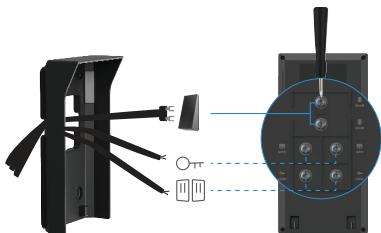


- 7 Place the drill template, then firmly attach the weather-proof shield with anchors and screws (PA4x25) to the wall.



- 8 Connect the wires to the terminal blocks of the intercom panel.

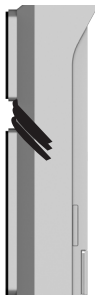
**i** Be careful not to cause a short-circuit when wiring.



- 9 Fit the intercom panel onto its weather-proof shield, meanwhile arrange the wires through the groove, avoiding the wires to be messed behind the intercom panel.

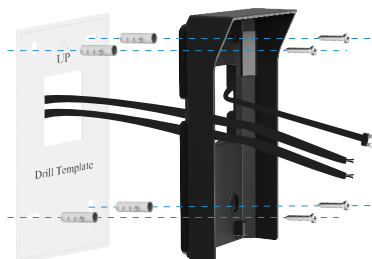


- 10 Check from the groove whether the wires are neatly arranged and not compressed.

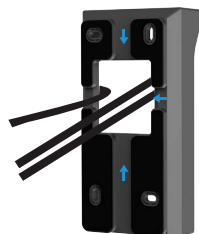


• When the wires needed to be connected to intercom panel are from the wall :

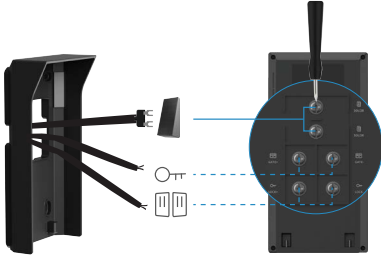
- 6 If your wires are from the hole of wall, take the wires through the holes of the drill template and the weather-proof shield.



- 7 Arrange the wire of solar panel through any grooves of the weather-proof shield. Then attach the weather-proof shield to the wall with anchors and screws(PA4x25) to the wall.



- 8 Connect the wires to the terminal blocks of the intercom panel.

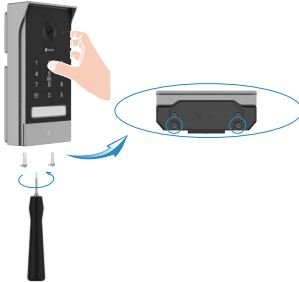


- 9 Fit the intercom panel onto its weather-proof shield, meanwhile arrange the solar panel wire through the groove.



- Then follow the steps below:

- 10/11 Hold firmly the upper hand of the intercom panel, re-Install the attachment screws with the screwdriver.



- 10/12 Press the doorbell button again to confirm the intercom panel and monitor is connected outdoors.



**!** Important: For a better image quality, please remove the protective film from the intercom panel before using it.

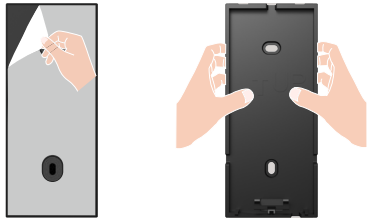


**Tip:** It is recommended that the wires be passed through a sheath to protect them from impacts and weather.

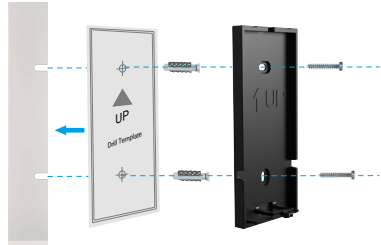


## 4. Install the Solar Panel

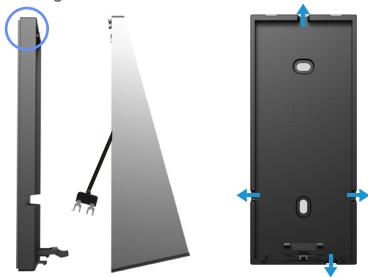
- 1 There are two ways to fix the backplate to the installation location. You can tear off the film of the foam sticker and then paste the backplate directly to the desired installation location. When the installation surface is rough, it's recommended to follow the next method.



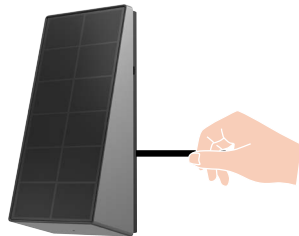
- 2 Or place the drill template onto the desired installation location. Drill two screw holes and insert anchors (No need to use on wooden surface). Secure the backplate using the provided metal screws (PA3x25).



- 3 Attach the solar panel to the back plate from top to bottom, aligning with the two slots at the top. There are four wire holes for connector to pass through.



- 4 If you have extra wire exposed, push it back to the solar panel through the wire hole.

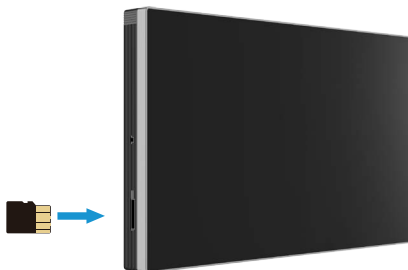


- 5 Installation is completed.



## 5. Install Micro SD Card (Optional)

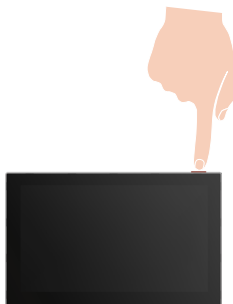
1. Insert a Micro SD card (sold separately) into the SD card slot as shown in the figure below.



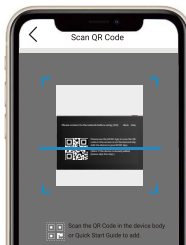
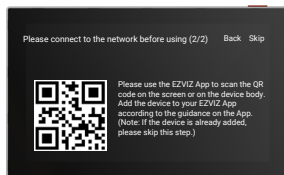
- i** After installing the Micro SD card, you should initialize the card in the EZVIZ app before using it.
2. In the EZVIZ app, tap the Record List in the Device Settings interface to check the SD card status.
3. If the memory card status displays as Uninitialized, tap to initialize it.
- i** The status will then change to Normal and it can store videos.

## Add Video Doorphone to EZVIZ App


1. Press the "Screen On/Off Button" to turn on the screen.



2. Follow the screen wizard to connect the monitor to Wi-Fi .
3. On your smartphone, log in to your EZVIZ app account, on the Home screen, tap "+" on the upper-right corner to go to the Scan QR Code interface.
4. Scan the QR code on the screen of the monitor.



5. Follow the EZVIZ app wizard to add the monitor to the EZVIZ app.

-  If you failed to connect the monitor to Wi-Fi, or you skip this step (step(1/2) on the monitor), you can choose to use EZVIZ app to finish Wi-Fi configuration:
1. Connect your smartphone to Wi-Fi (suggested)
  2. Log in to your EZVIZ app, and scan the QR code on the monitor.
  3. Follow the EZVIZ app wizard to finish Wi-Fi configuration and add the video doorphone to your the EZVIZ app.

## Configure the RFID Badge and Passcode

When adding the monitor to the EZVIZ app for the first time, it is essential to configure the badge or the passcode in the EZVIZ app:

### 1. Configure the RFID Badge

#### Add RFID badge

1. Log in to your EZVIZ app account.
2. Go to the Intercom Panel's settings page, choose Unlock Settings > Card Management.
3. Tap "Add cards", and set the name of the card, and tap "Next step".
4. Set the term of validity, and tap "Next step".
5. Put the RFID badge on the badge reading zone, the doorbell indicator flash 3 times indicates the badge add successfully.
6. Tap "finish".

#### Delete RFID badge

1. Log in to your EZVIZ app account.
2. Go to the Intercom Panel's settings page, choose Card Management.
3. Tap to choose the card you want to delete, and tap "Delete" ->"OK" to delete the card.

### 2. Configure the Passcode

#### Add passcode



1. Log in to your EZVIZ app account.
2. Go to the Intercom Panel's settings page, choose Unlock Settings > Passcode Management.
3. Tap "Add passcode", and set the name of the passcode and the term of validity.
4. Enter the passcode, and tap "finish".


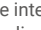

#### Delete passcode

1. Log in to your EZVIZ app account.
2. Go to the Intercom Panel's settings page, choose Passcode Management.
3. Tap to choose the passcode you want to delete, and tap "Delete" ->"OK" to delete the card.

## Four Unlocking Methods

### 1. Open the gate/door via the monitor

1. Go to the main menu on your monitor
2. Tap the  or  to unlock the lock or gate.

-  When the intercom panel is in sleep mode,  and  cannot be tapped on the monitor. After activating the intercom panel, the live view is displayed on the monitor, you can unlock the lock or gate.

## 2. Open the gate/door via the EZVIZ App

1. Log in to your EZVIZ app account.

2. Go to the intercom panel live view page, Tap the  or  to unlock the lock or gate.

 When the intercom panel is in sleep mode,  and  cannot be tapped on the EZVIZ App. After activating the intercom panel, the live view is displayed on the app, you can unlock the lock or gate.

## 3. Open the gate/door with the smart RFID badge



- **Unlock the the electric strike plate/ Lock:**


Quickly swipe your pre-programmed badge on the RFID reading zone. One short beep confirms the opening of the electric strike plate/Lock.

- **Unlock the Gate motor:**

Hold the badge for at least 3 seconds on the RFID reading zone. One short beep confirms the opening of the gate.

## 4. Open the gate/door via the passcode

After set the passcode on EZVIZ app, press the passcode on the intercom panel first and  or  second to unlock the lock or gate.

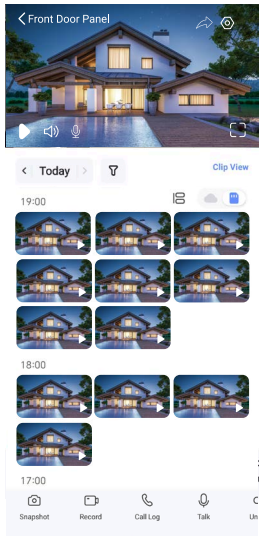
 When the Intercom panel is in sleep mode, first touch is to activate the panel. Entering passcode is then valid with voice prompt.














# View Your Device on the EZVIZ App




 The app interface may be different due to version update, and the interface of the app you installed on your phone shall prevail.

## 1. Live View

When you launch the EZVIZ app, the device page displays are shown below.  
You can view and listen to a live feed, take snapshots, record videos, and choose video definition as needed.



Icon	Description
	Share. Share your device.
	Settings. View or change the device settings.
	Full Screen Display. Tap to enjoy a full screen display for your filed of view.
	Cloud storage. Tap to see the videos stored in the cloud.
	SD card storage. Tap to see the videos stored in the SD card.
	Snapshot. Take a snapshot.
	Record. Manually start/stop recording.
	Call Log. View call logs.
	Talk. Tap the icon, and then follow the on-screen instructions to talk to or listen to people in front of the camera.
	Unlock. Tap to unlock the electric strike plate or lock.
	Open gate. Tap to unlock the gate.
	Definition. Select video resolution from Quad HD, Full HD or Hi-Def.
	Nearby Device. Tap to check available devices nearby.

	Popup. View the video displayed on top of another app you are using.
	Tip. Tap to view the FAQ of your device.
	Rearrange. Rearrange the sequence of all the functions above.

 Swipe left and right across the screen to see more icons.

## 2. Settings


### 2.1 Intercom Panel (Doorbell)

In the settings page, you can set the parameters of the Intercom Panel.

Parameter	Description
Name	View or tap to customize the name of your device here.
Unlock Settings	You can manage your card and passcode here for your device.
Message Notification	You can manage the device message and EZVIZ App notification.
Audio Settings	You can set relevant audio parameters for your device.
Image Settings	You can set relevant image parameters for your device.
Light Settings	You can set relevant light parameters for your device.
Battery	You can see relevant battery information for your device.
Privacy Settings	You can customize the privacy area here.
Device Information	You can see the device information here.
Share Device	You can share the device to you family member or guest.
Restart Device	Tap to restart the device.

### 2.2 Monitor

In the settings page, you can set the parameters of the Monitor.

Parameter	Description
Name	View or tap to customize the name of your device here.
Message Notification	You can set offline notification on/off.
Audio Settings	You can set screen ring on/off and choose the doorbell ringtones.
Screen Settings	You can set the screen brightness and auto-lock screen time here.
Record List	You can see the device storage status of the memory card.
Privacy Settings	You can encrypt your videos with encryption password.
Network Settings	<p>You can see the Wi-Fi your device connected and reset the device.</p> <p> If you want to change your device's Wi-Fi, please go to the screen, and choose settings-&gt; Network and time-&gt; Current Wi-Fi, and tap to choose the Wi-Fi you want to connect to.</p>

Device Information	You can see the device information here.
Restart Device	Tap to restart the device.
Delete Device	Tap to delete the device from EZVIZ App.

## EZVIZ Connect

### 1.Use Amazon Alexa

These instructions will enable you to control your EZVIZ devices with Amazon Alexa. If you run into any difficulties during the process, please refer to **Troubleshooting**.

**Before you start, make sure that:**

1. EZVIZ devices are connected to the EZVIZ app.
2. In the EZVIZ app, turn off the "Video Encryption" and turn on the "Audio" in the Device Settings page.
3. You have an Alexa-enabled device (i.e Echo Spot, Echo-Show, All-new Echo-Show, Fire TV (all generations), Fire TV stick (second generation only), or Fire TV Edition smart TVs).
4. The Amazon Alexa app is already installed on your smart device, and you have created an account.

**To Control EZVIZ devices with Amazon Alexa:**

1. Open the Alexa app and select "Skills and Games" from the menu.
2. On the Skills and Games screen, search for "EZVIZ", and you will find "EZVIZ" skills.
3. Select your EZVIZ device's skill, then tap **ENABLE TO USE**.
4. Enter your EZVIZ username and password, and tap **Sign in**.
5. Tap the **Authorize** button to authorize Alexa to access your EZVIZ account, so that Alexa can control your EZVIZ devices.
6. You will see "EZVIZ has been successfully linked", then tap **DISCOVER DEVICES** to allow Alexa to discover all your EZVIZ devices.
7. Go back to Alexa app menu and select "Devices", and under devices you will see all your EZVIZ devices.

**Voice Command**


Discover a new smart device via the "Smart Home" menu in the Alexa app or the Alexa Voice Control function. Once the device is found, you can control it with your voice. Speak simple commands to Alexa.

**Answer the EZVIZ Intercom Panel with Alexa**

After you've connected your EZVIZ Intercom Panel to your Alexa-enabled device, you can speak to your visitors through your Echo or Fire TV device.

To speak to your visitor, you can say:

- Alexa, answer [EZVIZ Intercom Panel Name].
- Alexa, talk to [EZVIZ Intercom Panel Name].

 Your device's name for example: "show xxxx camera," can be changed in the EZVIZ app. Each time you change the name of the device, you will need to discover the device again to update the name.

### Troubleshooting

**What should I do if Alexa fails to discover my device?**

Check if there are any Internet connecting problems.  
Try to restart the smart device and re-discover the device on Alexa.

**Why the device's status is "Offline" on Alexa?**

Your device might have been disconnected from the network. Restart the smart device and re-discover on Alexa.  
Check if your router is connected to the Internet and try again.

 For details about countries where Amazon Alexa is available, see Amazon Alexa's official website.

## 2. Use Google Assistant

With the Google Assistant, you can activate your EZVIZ device and watch live by speaking Google Assistant voice commands.

### The following devices and apps are required:

1. A functional EZVIZ app.
2. In the EZVIZ app, turn off the "Video Encryption" and turn on the "Audio" in the Device Settings page.
3. A TV with functional Chromecast connecting to it.
4. The Google Assistant app on your phone.

### To get started, follow the steps below:

1. Set up the EZVIZ device and make sure it works properly on the app.
2. Download the Google Home app from the App Store or Google Play Store™ and log into your Google account.
3. On the Myhome screen, tap "+" on the upper-left corner, and select "Set up device" from the menu list to go to the Set up interface.
4. Tap **Works with Google**, and search for "EZVIZ", where you will find "EZVIZ" skills.
5. Enter your EZVIZ username and password, and tap **Sign in**.
6. Tap the **Authorize** button to authorize Google to access your EZVIZ account, so that Google can control your EZVIZ devices.
7. Tap **Return to app**.
8. Follow the above steps to complete the authorization. When synchronization is completed, EZVIZ service will be listed under your list of services. To see a list of compatible devices under your EZVIZ account, tap on the EZVIZ service icon.
9. Now try some commands. Use the name of the camera that you created when you set up the system.

Users can manage devices as a single entity or in a group. Adding devices to a room allows users to control a group of devices at the same time using one command.

See the link for more information:

<https://support.google.com/googlehome/answer/7029485?co=GENIE.Platform%3DAndroid&hl=en>

 For additional information about the device, please refer to [www.ezviz.com/eu](http://www.ezviz.com/eu).



# SAFETY PRECAUTIONS

Any damage caused by a failure to adhere to the manual shall void the warranty. We assume no liability for damages resulting therefrom!

We cannot be held responsible for any damage to property or persons caused by incorrect use or a failure to adhere to the safety instructions.

This product has been manufactured in full compliance with safety instructions. In order to maintain this status and get the most out of the product, users must adhere to the safety instructions and warnings contained in this manual.



: This symbol indicates that there is a risk of electric shock or short-circuit.

- You should only use this product with a voltage between: 100-240 Volts and 50-60 hertz.
- Never attempt to use this device with a different voltage.
- Ensure that all the system's electrical connections conform to the instructions for use.
- In commercial establishments, ensure that you adhere to the electrical installation accident prevention regulations.
- In schools, training facilities, workshops, etc. qualified personnel must be on hand to monitor electronic equipment operation.
- You must follow the instructions for use of any other devices connected to the system.
- Please contact an experienced person if you have any doubts regarding equipment operation or safety.
- Never plug in or unplug electrical equipment with wet hands.
- When installing this product, check that the power supply cables are not at risk of being damaged.
- Never replace damaged electrical cables yourself! In this case, remove them and call an expert.
- The mains supply should be located close to the device and must be easily accessible.
- A switching device (a switch disconnecter, circuit breaker or equivalent device) must be easily accessible and integrated into the installation of the building wiring for equipment which is permanently connected to the network.
- To ensure the device has sufficient ventilation, keep the area around the device unobstructed.
- Ventilation should not be blocked by covering the ventilation opening with an object such as a newspaper, tablecloth or curtain, etc).
- No open flame sources, such as lit candles, should be placed on the device.
- Comply with the product's operating temperature.
- The device should not be exposed to running or splashing liquid and no object filled with liquid should be placed on the device.

## Initiatives on the Use of Video Products

Dear Valued EZVIZ Users,

Technology affects every aspect of our life. As a forward-looking tech company, we are increasingly aware of the role technology plays in improving efficiency and quality of our life. At the same time, we are also aware of the potential harm of its improper usage. For example, video products can record real, complete and clear images, therefore they hold great values in representing facts. Nevertheless, improper distribution, use and/or processing of video records may infringe on the privacy, legitimate rights and interests of others.

Committed to innovating technology for the good, we at EZVIZ hereby earnestly advocate that every user shall use video products properly and responsibly, thus to collectively create a positive environment where all related practices and usage comply with applicable laws and regulations, respect individuals' interests and rights, and promote social morality.

Here are EZVIZ's initiatives that we'd appreciate your attention:

1. Each individual possesses a reasonable expectation of privacy, and the use of video products should not be in conflict with such reasonable expectation. Therefore, a warning notice which clarifies the monitoring range should be displayed in a reasonable and effective manner, when installing video products in public areas. For non-public areas, the rights and interests of people involved shall be evaluated thoughtfully, including but not limited to, installing video products only after obtaining the consent of the stakeholders, and not installing highly-invisible video products without other's knowledge.

2. Video products objectively records footage of real activities within specific time and space. Users shall reasonably identify the people and rights involved in this scope in advance, to avoid any infringement of portrait, privacy or other legal rights of others while protecting themselves through video products. Notably, if you choose to enable the audio recording function on your camera, it will capture sounds, including conversations, within the monitoring range. We highly recommend a comprehensive assessment on the potential sound sources in the monitoring range, so as to fully understand the necessity and the reasonableness before you turn on the audio recording function.

3. Video products in use will consistently generate audio or visual data from real scenes –possibly including biometric information such as facial images – based on the user's selection of product features. Such data can be used or processed to use. Video products are only technological tools that do not and cannot humanly practice legal and moral standards to guide lawful and proper use of data. It is the methods and purposes of the people who control and use the generated data that make a difference. Therefore, data controllers shall not only strictly abide by applicable laws and regulations, but also fully respect non-obligatory rules including international conventions, moral standards, cultural norms, public order and local customs. Furthermore, we should always prioritize the protection of privacy and portrait rights, and other reasonable interests.

4. The video data continuously generated by video products carries the rights, values and other demands of various stakeholders. Thus, it is extremely crucial to ensure data security and shield the products from malicious intrusions. Every user and data controller shall, undertake all reasonable and necessary measures to maximize product and data security, avoiding data leakage, improper disclosure or misuse, including but not limited to, setting up access control, selecting a suitable network environment where video products are connected, establishing and constantly optimizing network security.

5. Video products have made great contributions to enhance the safety of our society, and we believe that they will continue to play a positive role in various aspects of our daily life. Any attempt to abuse these products to violate human rights or engage in unlawful activities contradicts the very essence of the value in tech innovation and product development. We encourage every user to establish your own methods and rules to evaluate and monitor the use of video products, so as to ensure that these products are always used properly, thoughtfully and with goodwill.

# Appendix

## 1. Rechargeable Lithium ion Battery

- 1. The battery type of the device: Portable battery.
- 2. The battery of this device is non-removable, which is risky to remove.

Component Parts	Hazardous Ingredients ( Chemical Name)	CAS No.	Concentration Ranges	Chemical Formula
Anode	Lithium Manganese Nickel and Cobalt Oxide	346417-97-8	36.6%	LiNi <sub>1-x</sub> Co <sub>y</sub> Mn <sub>1-x-y</sub> O <sub>2</sub>
	Polyvinylidene Fluoride(PVDF)	24937-79-9	0.4%	(C <sub>2</sub> H <sub>2</sub> F <sub>2</sub> ) <sub>n</sub>
Cathode	Graphite	7782-42-5	19.8%	C
	Styrene-Butadiene Rubber(SBR)	9003-55-8	0.4%	C <sub>12</sub> H <sub>14</sub>
	Carboxymethyl Cellulose(CMC)	9000-11-7	0.3%	C <sub>5</sub> H <sub>16</sub> NaO <sub>8</sub>
	Acetylene black	1333-86-4	0.9%	C
	Nickel	7440-02-0	0.7%	Ni
AL-foil	Aluminium	7429-90-5	3.5%	Al
Cu-foil	Copper	7440-50-8	7.6%	Cu
Electrolyte	Lithium Hexafluorophosphate	21324-40-3	2.0%	LiPF <sub>6</sub>
	Ethylene Carbonate(EC)	96-49-1	2.0%	C <sub>3</sub> H <sub>4</sub> O <sub>3</sub>
	Ethyl methyl carbonate	623-53-0	1.0%	C <sub>4</sub> H <sub>8</sub> O <sub>3</sub>
	Dimethyl carbonate	616-38-6	6.8%	C <sub>3</sub> H <sub>6</sub> O <sub>3</sub>
Separator	Polypropylene(PP)	9003-07-0	0.7%	(C <sub>3</sub> H <sub>6</sub> ) <sub>n</sub>
cell case	Ferrum	7439-89-6	17.3%	Fe

## 2. INFORMATION FOR PRIVATE HOUSEHOLDS

1. Separate collection of waste equipment: Electrical and electronic equipment that has become waste is referred to as waste equipment. Owners of waste equipment must dispose of it separately from unsorted municipal waste. In particular, waste equipment does not belong in household waste, but in special collection and return systems.

2. Batteries and rechargeable batteries as well as lamps: Owners of waste equipment shall, as a rule, separate waste batteries and rechargeable batteries that are not enclosed in the waste equipment, which can be removed from the waste equipment without being destroyed, from the waste equipment before handing them in at a collection point. This does not apply if waste equipment is prepared for reuse with the participation of a public waste management authority.

3. Options for returning waste equipment: Owners of waste equipment from private households can return it free of charge to the collection points of the public waste management authorities or to the take-back points set up by manufacturers or distributors within the meaning of the Electrical and Electronics Equipment Law. Stores with a sales area of at least 400 m² for electrical and electronic equipment and those grocery stores with a total sales area of at least 800 m² that offer electrical and electronic equipment several times a year or on a permanent basis and make it available in the market are required to take it back. This also applies in the case of distribution using means of distance communication, if the storage and shipping areas for electrical and electronic equipment are at least 400 m² or the total storage and shipping areas are at least 800 m². Distributors shall, in principle, ensure take-back by providing suitable return facilities at a reasonable distance from the respective end user. The possibility of returning waste equipment free of charge exists for distributors who are obliged to take it back, among other things, if a new similar device that essentially fulfills the same functions is delivered to an end user.

4. Privacy Notice: Waste equipment often contains sensitive personal data. This applies in particular to devices of information and telecommunications technology such as computers and smartphones. In your own interest, please note that each end user is responsible for deleting the data on the waste equipment to be disposed of.

5. Meaning of the symbol "crossed-out wheelie bin": The symbol of a crossed-out wheelie bin regularly depicted on electrical and electronic equipment indicates that the respective device is to be collected separately from unsorted municipal waste at the end of its service life.