

RG-RAP1200(P)

Reyee Wi-Fi 5 1267Mbps Wall-mounted Access Point



Highlights

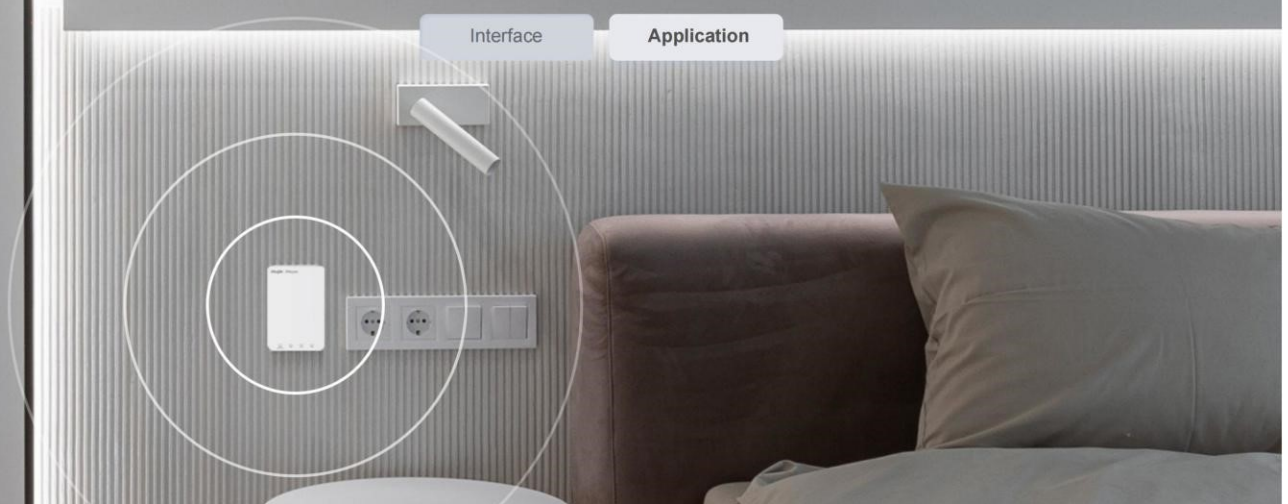
- Dual-radio performance, full gigabit wall-mounted access point
- Better experience with MU-MIMO under 802.11ac Wave2
- Multi-service support with full gigabit ports
- Easy installation and full compatibility
- Optimization in one-click mode, achieving better Wi-Fi experience
- Easy Wi-Fi network construction within 3 minutes

Highlight Features

Dual-Radio Performance, Gigabit Wall-mounted Access Point



Dual-Radio Performance, Gigabit Wall-mounted Access Point

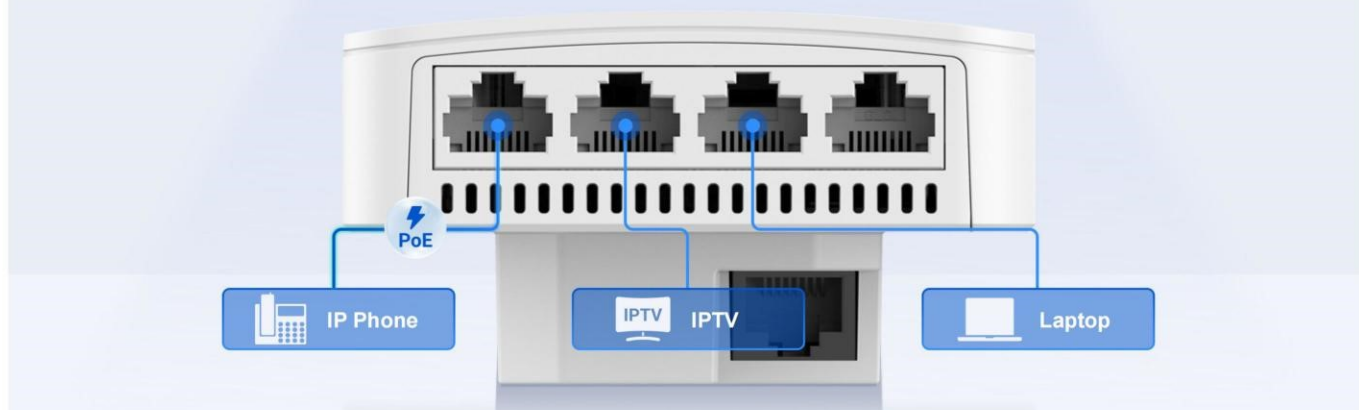


Better Experience with MU-MIMO under 802.11ac Wave2



Highlight Features

Multi-Service Supported with Full Gigabit Ports



Easy Installation, Worldwide Compatible



One Click to Optimize, Get Better Wi-Fi Experience

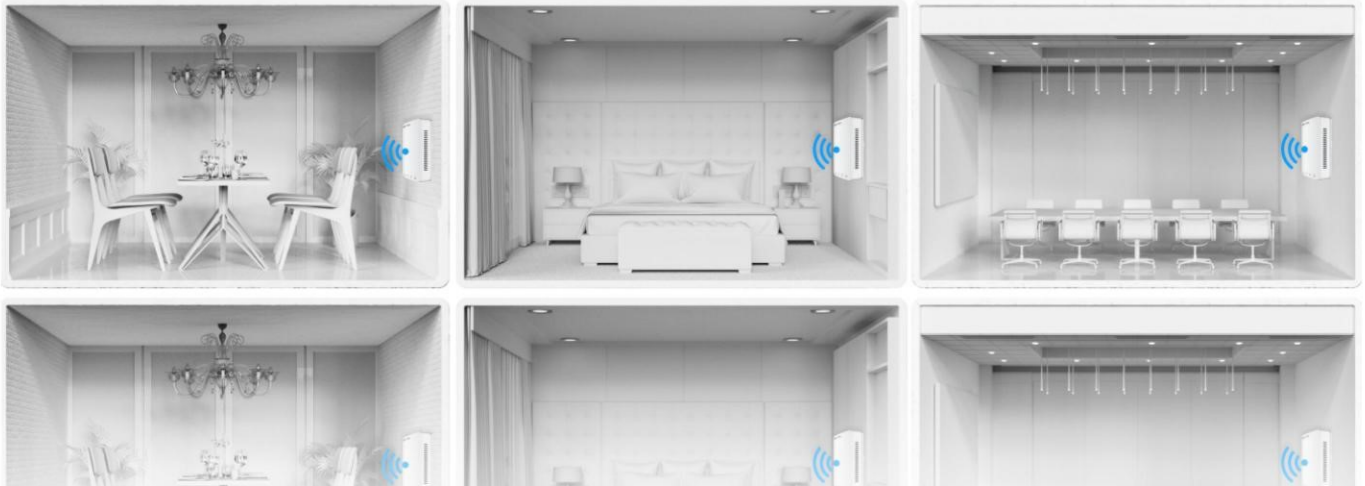
The WIO (Wi-Fi Intelligent Optimization) technology allows you to optimize wireless network by one click.



Highlight Features

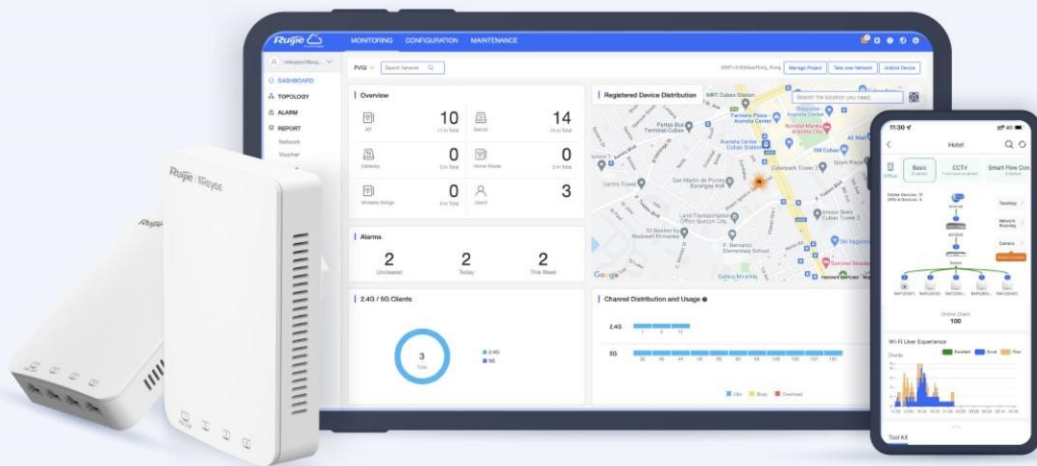
Easily Set Up Your Wi-Fi Network in 3 Minutes

With SON (Self-organizing Network) technology, easily set up a whole Wi-Fi network by Ruijie Cloud APP.



Cloud, Make Your Business Easy

- Self-organizing Network
- Centralized Network Management
- Scenario Based Configuration
- Cloud Portal Authentication
- Remote Monitoring and Maintenance



/ Product Information

Model	RG-RAP1200(P)
Product Type	Wall AP

/ Hardware Specifications

Model	RG-RAP1200(P)
Wi-Fi Radio	
6 GHz Wi-Fi	No
5 GHz Wi-Fi	Wi-Fi 4 (IEEE 802.11a/n) Wi-Fi 5 (IEEE 802.11ac)
2.4 GHz Wi-Fi	Wi-Fi 4 (IEEE 802.11b/g/n)
Operating band	IEEE 802.11b/g/n, 2.400 GHz to 2.4835 GHz IEEE 802.11a/n/ac, 5.150 GHz to 5.350 GHz, 5.470 GHz to 5.725 GHz, 5.725 GHz to 5.850 GHz Note: Available bands vary with countries and regions. To use the preceding frequency bands, ensure that your country or region supports these frequency bands.
Radio design	Dual-radio 4 spatial streams • 2.4 GHz: 2 x 2, MIMO • 5 GHz: 2 x 2, MIMO
FEM	iFEM
6 GHz channel width	No
5 GHz channel width	Auto/20/40/80 MHz
2.4 GHz channel width	Auto/20/40 MHz
Maximum wireless data rate	1266 Mbps
6 GHz wireless data rate	No
5 GHz wireless data rate	866 Mbps
2.4 GHz wireless data rate	400 Mbps
Maximum transmit power	Frequency bands and maximum Effective Isotropic Radiated Power (EIRP):

/ Hardware Specifications

Model	RG-RAP1200(P)
	<p>Note: Country specific restrictions apply.</p> <p>European Union & United Kingdom: 2400–2483.5 MHz, EIRP ≤ 20 dBm 5150–5350 MHz, EIRP ≤ 23 dBm 5470–5725 MHz, EIRP ≤ 30 dBm</p> <p>United States: 2400–2483.5 MHz, max output power ≤ 30 dBm & EIRP ≤ 36 dBm 5150–5250 MHz, max output power ≤ 30 dBm & EIRP ≤ 36 dBm 5250–5350 MHz, max output power < 24 dBm & EIRP ≤ 30 dBm 5470–5725 MHz, max output power < 24 dBm & EIRP ≤ 30 dBm 5725–5850 MHz, max output power ≤ 30 dBm & EIRP ≤ 36 dBm</p> <p>Myanmar: 2400–2483.5 MHz, EIRP ≤ 23 dBm 5725–5825 MHz, EIRP ≤ 30 dBm</p> <p>Thailand: 2400–2483.5 MHz, EIRP ≤ 20 dBm 5150–5350 MHz, EIRP ≤ 23 dBm 5470–5725 MHz, EIRP ≤ 30 dBm 5725–5825 MHz, EIRP ≤ 30 dBm</p> <p>Indonesia: 2400–2483.5 MHz, EIRP ≤ 27 dBm 5150–5350 MHz, EIRP ≤ 23 dBm 5725–5825 MHz, EIRP ≤ 23 dBm</p> <p>Egypt: 2400–2483.5 MHz, EIRP ≤ 20 dBm 5150–5350 MHz, EIRP ≤ 23 dBm</p>
Maximum transmit power (6 GHz)	No
Maximum transmit power (5 GHz)	Combined power: 21 dBm (single-stream power: 18 dBm) Note: The transmit power varies according to regulations in different countries and regions.
Maximum transmit power (2.4 GHz)	Combined power: 21 dBm (single-stream power: 18 dBm) Note: The transmit power varies according to regulations in different countries and regions.
Coverage range	40 m ² (430.56 square ft.) Note: The data is obtained in an ideal environment without obstruction. The signal coverage radius depends on client performance and environmental interference.
Modulation	OFDM: BPSK @ 6/9 Mbps, QPSK @ 12/18 Mbps, 16-QAM @ 24 Mbps, 64-QAM @ 48/54 Mbps DSSS: DBPSK @ 1 Mbps, DQPSK @ 2 Mbps, and CCK @ 5.5/11 Mbps MIMO-OFDM: BPSK, QPSK, 16-QAM, 64-QAM, 256-QAM

/ Hardware Specifications

Model	RG-RAP1200(P)
Receive sensitivity	11b: -91 dBm (1 Mbps), -88 dBm (5.5 Mbps), -85 dBm (11 Mbps) 11a/g: -89 dBm (6 Mbps), -80 dBm (24 Mbps), -76 dBm (36 Mbps), -71 dBm (54 Mbps) 11n: -83 dBm (MCS0), -65 dBm (MCS7), -83 dBm (MCS8), -65 dBm (MCS15) 11ac: 20 MHz: -83 dBm (MCS0), -57 dBm (MCS9) 11ac: 40 MHz: -79 dBm (MCS0), -57 dBm (MCS9) 11ac: 80 MHz: -76 dBm (MCS0), -51 dBm (MCS9)
Antenna	
Antenna	2.4 GHz: 2 built-in omnidirectional antennas 5 GHz: 2 built-in omnidirectional antennas
Antenna horizontal orientation	No
Antenna vertical orientation	No
Antenna gain (6 GHz)	No
Antenna gain (5 GHz)	2.00 dBi
Antenna gain (2.4 GHz)	2.00 dBi
Dimensions and Weight	
Product dimensions (W x D x H)	86 mm x 50 mm x 126 mm (3.39 in. x 1.97 in. x 4.96 in.)
Color	White
Weight	≤ 0.24 kg (0.53 lbs.) (without packaging materials)
Shipping weight	≤ 0.31 kg (0.68 lbs.)
Port Specifications	
Number of 10/100/1000BASE-T ports	5
Reset button	1
LEDs	1 x system status LED
Power Supply and Consumption	
Power supply	PoE/PoE+
Local power supply	No

/ Hardware Specifications

Model	RG-RAP1200(P)
Dimensions of the DC connector	No
PoE In standard	<ul style="list-style-type: none">• IEEE 802.3af (PoE)• IEEE 802.3at (PoE+)
Number of PoE Out ports	1
PoE budget	4 W (when power source is IEEE 802.3af-compliant) 15.4 W (when power source is IEEE 802.3at-compliant)
Maximum power consumption	8 W (excluding PoE output)
Environment and Reliability	
Operating temperature	0°C to 40°C (32°F to 104°F)
Storage temperature	−40°C to +70°C (−40°F to +158°F)
Operating humidity	5% RH to 95% RH (non-condensing)
Storage humidity	5% RH to 95% RH (non-condensing)
Mounting options	Junction box
IP rating	IP41
Surge protection	Ethernet port: ±2 kV for common mode
MTBF	250,000 hours
Certification and Regulatory Compliance	
RoHS	Yes
Safety compliance	EN 62368-1
EMC	EN 55032 EN 55035 EN 61000-3-3 EN 61000-3-2 EN 301489-1 EN 301489-3 EN 301489-17
RF	EN 300 328 EN 301 893 EN 300 440
Certification	CE, FCC, CB, ISED, cTUVus

/ Hardware Specifications

Model	RG-RAP1200(P)
System Specifications	
Flash memory	8 MB
RAM	128 MB CPU built-in DDR3

Software Specifications

Model	RG-RAP1200(P)
Basic Configurations	
AP mode	Yes
Routing mode	Yes
Internet access mode	Static IP address Dynamic IP address PPPoE
Interface	
IPTV transparent transmission	Yes
Ethernet Interface	
PPPoE clients	Yes
Ethernet Switching	
IEEE 802.1Q VLAN	Yes
WLAN	
Maximum number of associated wireless clients	64 (2.4 GHz) 110 (5 GHz) 110 (2.4 GHz and 5 GHz enabled)
Recommended number of associated wireless clients	16 (2.4 GHz) 64 (5 GHz) 80 (2.4 GHz and 5 GHz enabled)
Maximum number of SSIDs	8
Radio-based client limiting	Yes
Layer 2 isolation	Yes
OFDMA	No
WMM	Yes
DFS	Yes
MLO	No
4K-QAM	No
Different SSIDs for the same VLAN	Yes

Software Specifications

Model	RG-RAP1200(P)
Enabling/Disabling MLO	No
AP load balancing	No
Beamforming	Yes
802.11k/v roaming	No
Fast transition (802.11r)	No
Layer 2 roaming	Yes
Layer 3 roaming	Yes
AI roaming	Yes
PSK authentication	Yes
Static allowlist	Yes
Adjusting the transmit power for beacon and probe frames	Yes
Encryption mode (WPA-PSK, WPA2-PSK, WPA/WPA2-PSK)	Yes
OWE (Enhanced Open) WPA3-SAE WPA2-PSK/WPA3-SAE	No
Number of blocklists and allowlists based on MAC addresses (single SSID)	256
Number of global blocklists/allowlists	256
Mesh management	Yes
AP Mesh	Yes
AP portal authentication	No
Maximum number of devices that can be managed	300
One-Click Network Optimization	Yes
Static blocklist	Yes

Software Specifications

Model	RG-RAP1200(P)
IP Service	
ARP binding	Yes
IPv4 ping	Yes
IPv6 ping	No
Traceroute	Yes
Static/Dynamic NAT	Yes
DHCP server	Yes
Authentication	
802.1X authentication	No
Network Management and Monitoring	
Wireless repeater mode	Yes
Web login information	Single-device login address: 10.44.77.254 Network-wide login address: 10.44.77.253 Default password: admin
Network-wide configuration and management	Yes
Ruijie Reyee App management	Yes
eWeb management	Yes
Ruijie Cloud management	Yes
SNMP	No
Configuration synchronization among the app, eWeb, and Ruijie Cloud	Yes
Displaying device information on Ruijie Cloud	Yes

Package Contents

Model	RG-RAP1200(P)
Package Contents	
Package Contents	1 x AP 2 x Cross pan head screws (M4 x 40 mm) 1 x User Manual 1 x Warranty Card
Accessories	
Power adapter	No

Ruijie | ReYee

 **R**edefine **y**our **e**asy network



Ruijie Networks Co., Ltd.

Official Website: <https://Reyee.Ruijie.com>